

Learning Plans



Year 10 GCSE ART
Subject INTERIORS
Learning Plan 1 – Autumn Term 2
Knowledge Focus <u>Pupils to begin to generate work for their final 2022 GCSE portfolio</u>

Autumn 1 Objectives

In this opening half-term of Year 10, it is the Art Department’s aim for all prospective GCSE pupils to begin to begin work on the project/s that will form the basis of their final individual GCSE folders.

Creative work takes place within the structure of clearly defined projects, but which also allows for all pupils to expressive their own creative ideas as well. The assembled final body of work links together (a ROWND task) and tells an overarching story which ultimately comes together at the end of KS4 under the title of “Interiors”.

Knowledge, understanding and skills to be developed

Critical understanding - developing ideas through investigations, demonstrating critical understanding of sources.


Creative making and refining of work by exploring ideas, selecting and experimenting with appropriate media, materials, techniques and processes.




Reflective recording – recording ideas, observations and insights that are relevant to intentions as work progresses.




Personal presentation - presenting a personal and meaningful response that realises intentions and demonstrates understanding of visual language.

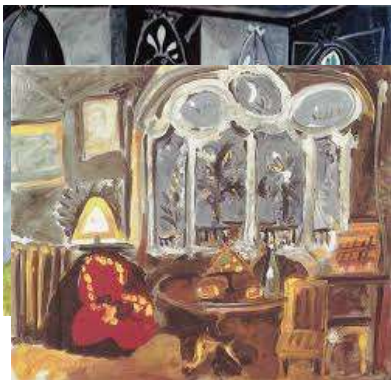
Key Vocabulary to be learned

Interiors, John Bratby, social realism, Pablo Picasso, cubism, Cannes, “La Californie”.

Activities		Resources	Work to be submitted by
<p>Week 1 Activities (week beginning 2/11/20)</p> <p><u>Week 1 Learning Objectives</u> <u>Theme Interior Spaces A5 drawings of the T9 Art room.</u> An exercise in making first hand direct observational drawings of an “Interior” environment, where the underlying idea is to look at the shapes, forms, objects and lines etc. and build up a set of drawings, in a range of materials that record some sort of “imagined” room, but using the T9 Art studio as a source. Further work (hwk) could be to repeat the task using spaces at home.</p>		<p><u>Resources and where to access them</u></p> <p>Any paper/card/suitable medium that pupils have access to in school or at home Pens, pencils, coloured pencils, fine liners as needed. Further instructions if needed on Resource share and Teams. Use teams or gdavies@newtown-hs.powys.sch.uk / shanson@newtown-hs.powys.sch.uk to upload any copies of work examples when completed.</p>	<p>(week beginning 9/11/20)</p>

<p>Week 2 Activities (week beginning 9/11/20)</p> <p><u>Week 2 Learning Objectives</u> <u>Theme Interior Spaces A5 drawings of the T9 Art room (continued)</u> A continuation of the opening exercise where pupils make first hand direct observational drawings of an “Interior” environment, where the underlying idea is to look at the shapes, forms, objects and lines etc. and build up a set of drawings, in a range of materials that record some sort of “imagined” room, again using the T9 Art studio as a source. Further work (hwk) could be to repeat the task using spaces at home.</p>		<p><u>Resources and where to access them</u></p> <p>Any paper/card/suitable medium that pupils have access to in school or at home Pens, pencils, coloured pencils, fine liners as needed. Further instructions if needed on Resource share and Teams. Use teams or gdavies@newtown-hs.powys.sch.uk / shanson@newtown-hs.powys.sch.uk to upload any copies of work examples when completed.</p>	<p>(week beginning 16/11/20)</p>
<p>Week 3 Activities (week beginning 16/11/20)</p> <p><u>Theme John Bratby “The Toilet (1955)”</u></p>  <p><u>Week 3 Learning Objectives</u> The main focus of the GCSE coursework folder is the studio/villa of Picasso in Cannes which he moved to in 1955. John Bratby’s legendary social realist painting, “The Toilet” was painted in the same year. The painting provides an excellent counterpoint to the opulent surroundings of Picasso. This theme continues the “Interiors” story, and pupils will be expected to make drawings of this “Interior” using these shapes, forms and lines etc. in order to build up a set of drawings of “The Toilet”, in a range of materials that record this room. Further work (hwk) could be to repeat the task using the bathroom space at home.</p>		<p><u>Resources and where to access them</u></p> <p>Any paper/card/suitable medium that pupils have access to in school or at home Pens, pencils, coloured pencils, fine liners as needed.</p> <p>Google images: John Bratby’s 1955 picture “The Toilet”, 2 different versions.</p> <p>Resource share P/P of artists’ studio environments.</p>	<p>(week beginning 23/11/20)</p>

<p>Week 4 Activities (week beginning (23/11/20))</p> <p><u>Theme John Bratby “The Toilet (1955)”</u> As above</p> <p><u>Week 4 Learning Objectives</u> As above.</p>		<p><u>Resources and where to access them</u></p> <p>Any paper/card/suitable medium that pupils have access to in school or at home Pens, pencils, coloured pencils, fine liners as needed.</p> <p>Google images: John Bratby’s 1955 picture “The Toilet”, 2 different versions.</p> <p>Resource share P/P of artists’ studio environments.</p>	<p>(week beginning (30/11/20))</p>
<p>Week 5 Activities (week beginning (30/11/20))</p> <p><u>Theme Consolidation of Weeks 1-4</u></p> <p><u>Week 5 Learning Objectives</u> Pupils to bring all work so far completed in weeks 1-4 to a finished state, revisiting existing pieces to bring them up to a final finished standard.</p>		<p><u>Resources and where to access them</u></p> <p>Any paper/card/suitable medium that pupils have access to in school or at home Pens, pencils, coloured pencils, fine liners as needed.</p> <p>Google images: John Bratby’s 1955 picture “The Toilet”, 2 different versions.</p> <p>Resource share P/P of artists’ studio environments.</p>	<p>(week beginning (7/12/20))</p>
<p>Week 6 Activities (week beginning (7/12/20))</p> <p><u>Theme Picasso: The Studios at Cannes</u></p> <p><u>Week 6 Learning Objectives</u></p> <p>The main focus of the Art GCSE “Interiors” project is a set of paintings made by Picasso at his studio/villa in Cannes during the 1950s. The villa at “La Californie” links the opening work made by pupils thus far on the Interiors theme, to the studios of Picasso see below). Pupils will first be expected to make different copies/versions, reinterpretations of the studio pictures supplied, in a range and variety of materials. In this first wave of creativity on the theme, A5 versions x 4 of each studio will need to be produced by pupils, before larger and more creatively interpretive versions are made.</p>		<p><u>Resources and where to access them</u></p> <p>Any paper/card/suitable medium that pupils have access to in school or at home Pens, pencils, coloured pencils, fine liners as needed.</p> <p>Resource share P/P of artists’ studio environments.</p> <p>Photocopied resources of Picasso studio environment at ~”La Californie”, Cannes</p> <p>.</p>	<p>(week beginning (14/12/20))</p>



Feedback Given	Support/Extension/Challenge Tasks/	Useful Websites
<p>By GD and SH via:</p> <p>Whole Class Feedback WAGOLL/ Modelled example Task Success Criteria</p>	<p>Tasks to be made available on RESOURCE SHARE and TEAMS to accompany P/P</p>	<p>GOOGLE IMAGES pages for highlighted artists in P/P and LP (John Bratby and Pablo Picasso).</p>
<p>Skills Development</p>		
<p>Reading/Writing/Oracy Development</p>	<p>Numeracy Development</p>	<p>ICT Development</p>
<p>Tasks to be made available on RESOURCE SHARE and TEAMS to accompany P/P</p>	<p>Tasks to be made available on RESOURCE SHARE and TEAMS to accompany P/P</p>	<p>Tasks to be developed at each stage through digital photography and Photoshop</p>

BELONG, BELIEVE, ACHIEVE
PERTHYN, CREDU, LLWYDDO